

Rex Gooding



The Old Post Office, Hardigate Road, Cropwell

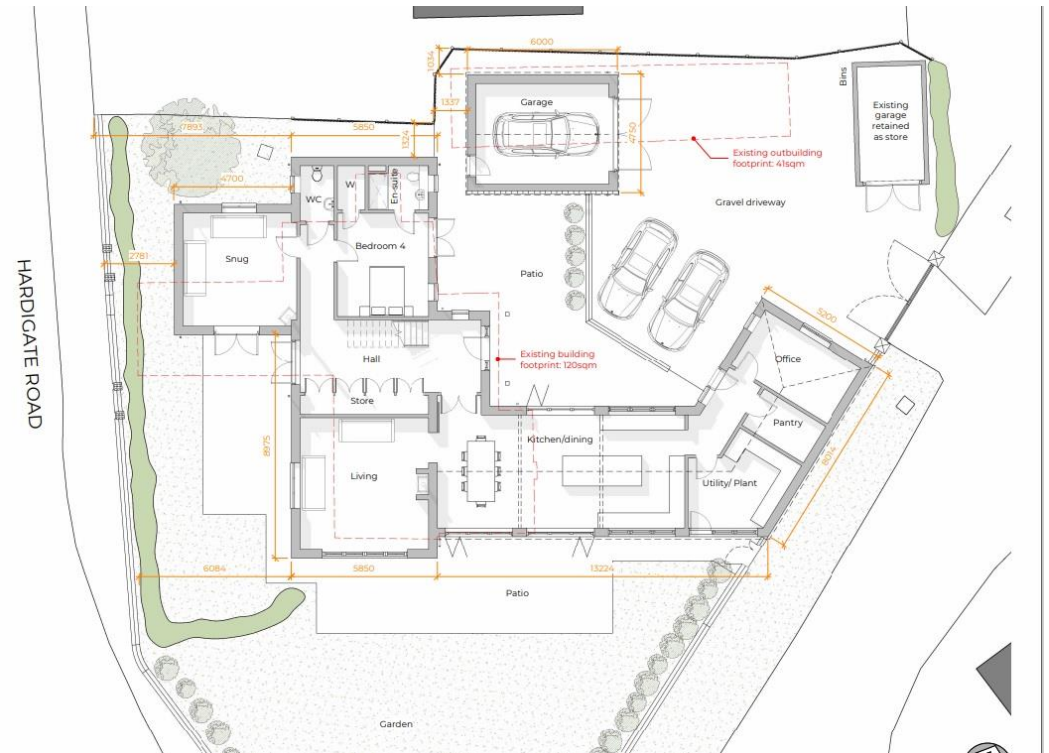
Offers Over: £430,000

The Old Post Office, Hardigate Road, Cropwell Butler, NG12 3AH

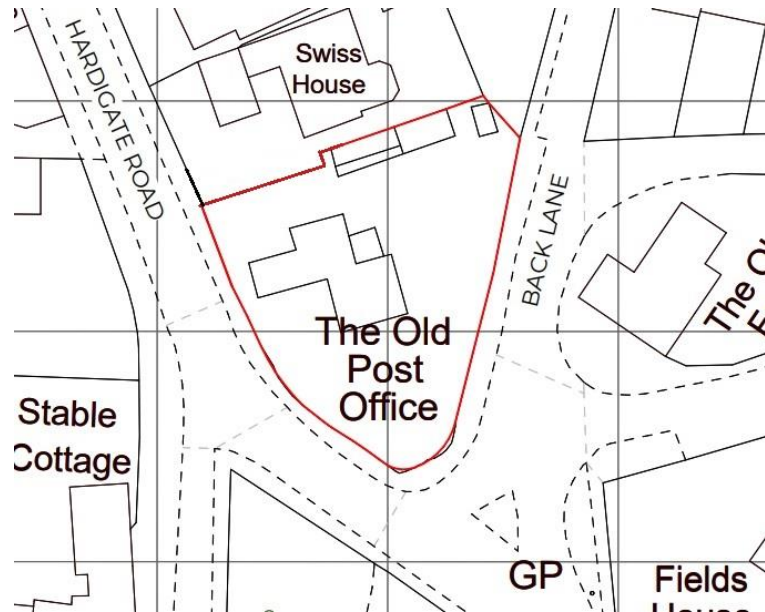
Full planning permission has been granted to demolish The Old Post Office and build an impressive 3400 square foot new build home on this lovely corner plot in the heart of one of Nottinghamshire's most sought after villages. Building plots rarely come up for sale in Cropwell Butler and this offers a unique opportunity for a buyer to build their dream home in a stunning location overlooking the village green. Full details and plans are available on the Rushcliffe Borough Council planning portal - Reference 22/00676/FUL.

Accommodation & Amenities

- An Extremely Rare Residential Development Opportunity in the Heart of Cropwell Butler
- Lovely Corner Plot Overlooking the Village Green
- Planning Permission Granted for 3400 Square Feet New Build Home
- Highly Regarded Village Close to West Bridgford
- South West Facing Gardens







South Elevation
1:100



West Elevation
1:100

Material Key

1	Dark red brick with white mortar
2	Dark grey slate roof

KOR ARCHITECTS
 11 Church Square, Nottingham NG1 1PE
 0115 9455553 | info@rexgooding.com
 www.rexgooding.com

Replacement dwelling
 The Old Post Office
 Hardigate Road
 Cropwell Butler, Notts
 NG17 5AH



North Elevation
1:100



North-East Gable Elevation
1:100



Inner East Elevation
1:100